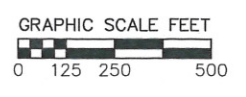
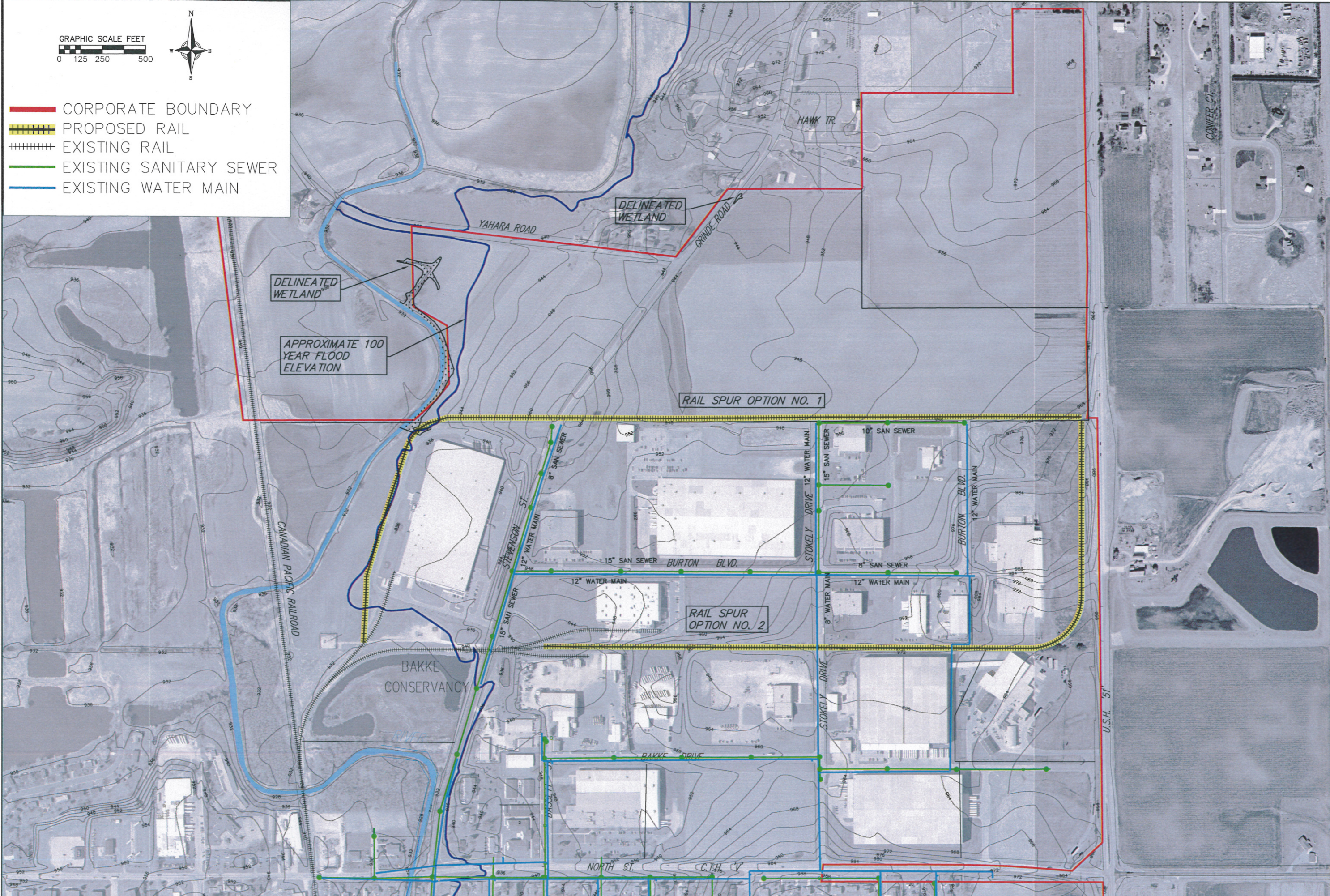


13 Dec 2010 7:57a R:\DeForest 013076160 North Business Park Expansion Plan\Engineering\_Bus Park\Civil\_3D\Rail Access option.dwg by: rmmat ©2009 Vierbicher Associates, Inc.



- CORPORATE BOUNDARY
- ▨▨▨▨▨ PROPOSED RAIL
- ▩▩▩▩▩ EXISTING RAIL
- EXISTING SANITARY SEWER
- EXISTING WATER MAIN



**vierbicher**  
 planners | engineers | advisors  
 REESEBURG, MADISON, PRASKE DU CHIEN  
 400 Viking Drive, Reeseburg, Wisconsin, 53959  
 Phone: (608) 524-4468 Fax: (608) 524-8218

**NORTH BUSINESS PARK**  
**SITE MAP**  
**VILLAGE OF DEFOREST**

REVISIONS	NO.	DATE	REMARKS

SCALE AS SHOWN  
 DATE 12-2010  
 DRAFTER MMAT  
 CHECKED CMAT  
 PROJECT NO. 013076160  
 SHEET 1 OF 1  
 DWG. NO.