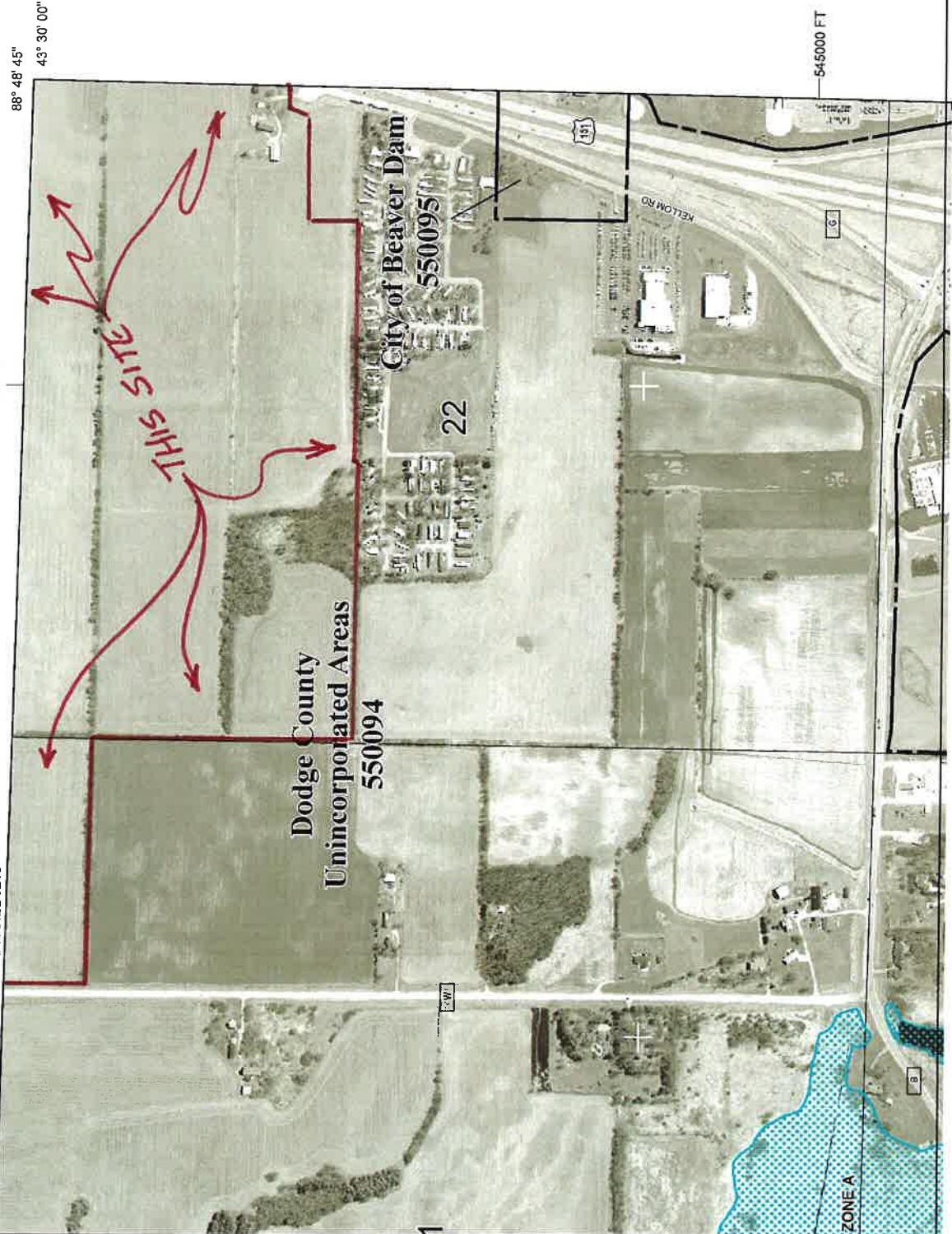


NOTE: THIS PANEL NOT PRINTED BECAUSE NO SPECIAL FLOOD HAZARD AREAS EXIST ON THIS PANEL. SEE SHEET 2.

352000mE

JOINS PANEL 0215

353000mE



MAP SCALE 1" = 500'



NATIONAL FLOOD INSURANCE PROGRAM

FIRM
FLOOD INSURANCE RATE MAP
DODGE COUNTY,
WISCONSIN
AND INCORPORATED AREAS

PANEL 382 OF 760
 (SEE MAP INDEX FOR FIRM PANEL LAYOUT)

COUNTY: DODGE COUNTY
 FEDERAL CITY OF: 550094
 NUMBER: 550094
 PANEL: 382
 SUBPANEL: F

MAP NUMBER: 59027C0352F
 EFFECTIVE DATE: APRIL 19, 2010

Federal Emergency Management Agency

Needs to User: The Map Number shown below is for the Flood Insurance Rate Map (FIRM) Community Number shown above should be used on insurance applications for the subject community.



This is an official copy of a portion of the above referenced flood map. It was released using F-MIT On-Line. This map does not reflect changes to the flood map which may have been made subsequent to the date on the map. For more information on the National Flood Insurance Program flood maps check the FEMA Flood Map Store at www.fema.gov.



* PANEL NOT PRINTED - NO SPECIAL FLOOD HAZARD AREAS
** PANEL NOT PRINTED - AREA OUTSIDE COUNTY BOUNDARY

NATIONAL FLOOD INSURANCE PROGRAM

MAP INDEX

FIRM

FLOOD INSURANCE RATE MAP
DODGE COUNTY,
WISCONSIN
AND INCORPORATED AREAS
(SEE LISTING OF COMMUNITIES TABLE)

MAP INDEX

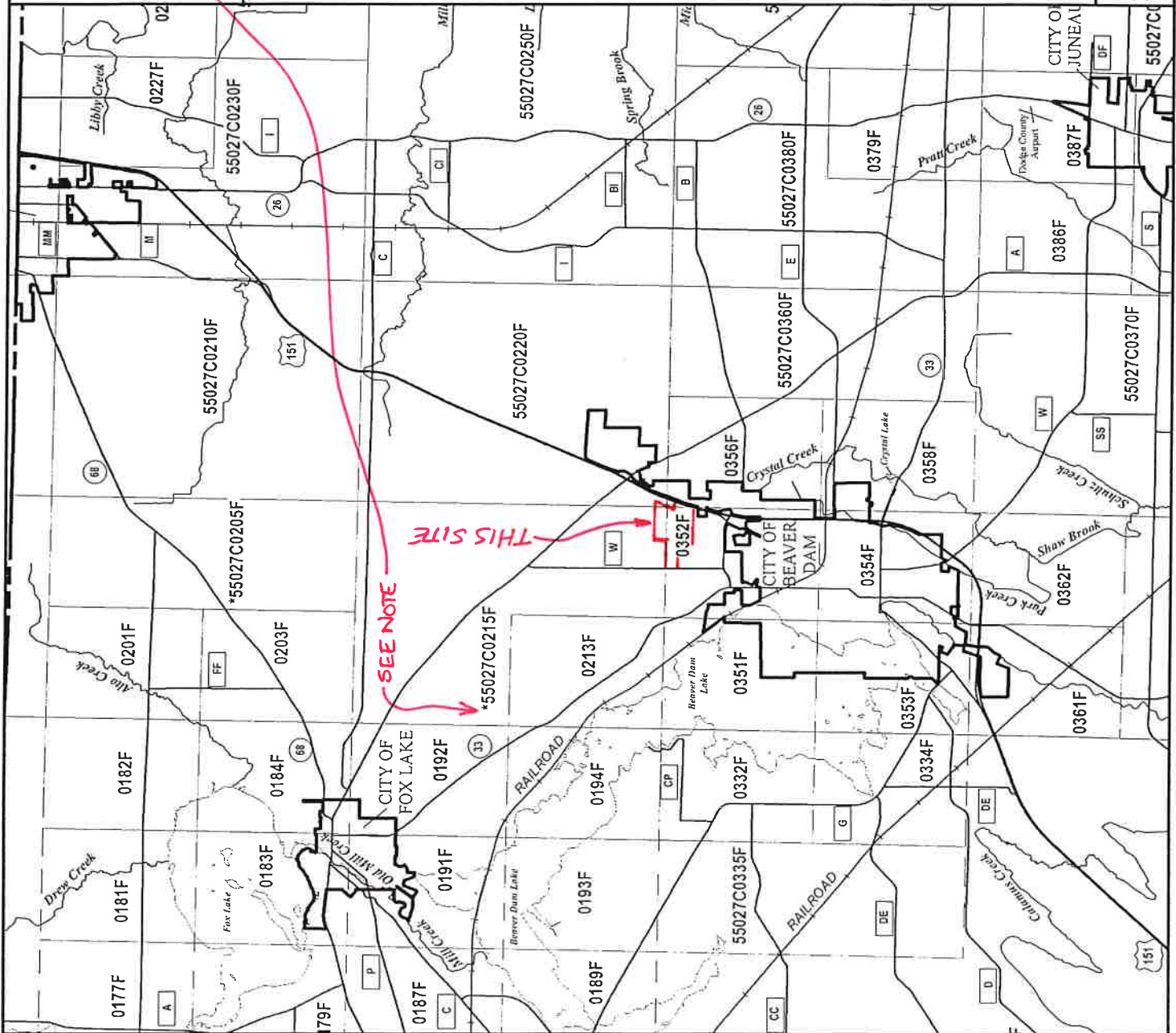
PANELS PRINTED: 25, 50, 70, 100,
125, 150, 159, 160, 175, 176, 177, 178, 179, 181,
182, 183, 184, 187, 189, 190, 191, 192, 193, 194,
201, 203, 210, 213, 220, 227, 230, 231, 235, 250,
265, 268, 269, 270, 275, 280, 289, 290, 300, 325,
332, 334, 335, 350, 351, 352, 353, 354, 356, 358,
360, 361, 362, 365, 370, 378, 380, 384, 385, 386,
387, 390, 392, 394, 395, 403, 405, 406, 407, 411,
413, 415, 418, 420, 450, 457, 459, 475, 476, 478,
480, 500, 505, 515, 525, 532, 535, 550, 551, 552,
553, 554, 559, 560, 565, 567, 570, 580, 585, 586,
590, 595, 625, 628, 629, 630, 650, 660, 675, 676,
677, 678, 679, 700, 706, 707, 708, 709, 725, 750



MAP NUMBER
55027CIND0A

EFFECTIVE DATE
APRIL 19, 2010
Federal Emergency Management Agency

This is an official copy of a portion of the above referenced flood map. It was extracted using F-MIT On-Line. This map does not reflect changes or amendments which may have been made subsequent to the date on the title block. For the latest product information about National Flood Insurance Program flood maps check the FEMA Flood Map Store at www.msc.fema.gov



SEE NOTE

THIS SITE

