

Fitchburg Technology Campus – Phase II

City of Fitchburg Water Capacity and Connection Fees

The City of Fitchburg analyzes the water system as a whole, taking into account all future developments and it plans for additional pump capacity/storage based on this complete system analysis. The City installs infrastructure as needed to ensure adequate capacity for future developments.

Current Capacity:

- The total available pump capacity for the system is 6.9 MGD (based on 4800 gpm pump capacity).
- The current highest max day demand is 4.2 MGD (2005).
- There is 2.25 million gallons of storage capacity.
- There is a future well in the CIP for 2014 (Capacity: 1,500 gpm).

For sanitary sewer service, the Fitchburg Technology Campus – Phase II will be serviced by the Woods Hollow interceptor; available capacity for this site is 720 gpm (peak). Note 61 gpm (peak) of the 781 gpm (peak) indicated on map is for the property to the north. The Syene interceptor, mentioned during the field investigation meeting on July 10, 2012 will not service this site; it will serve lands east and south of this site.

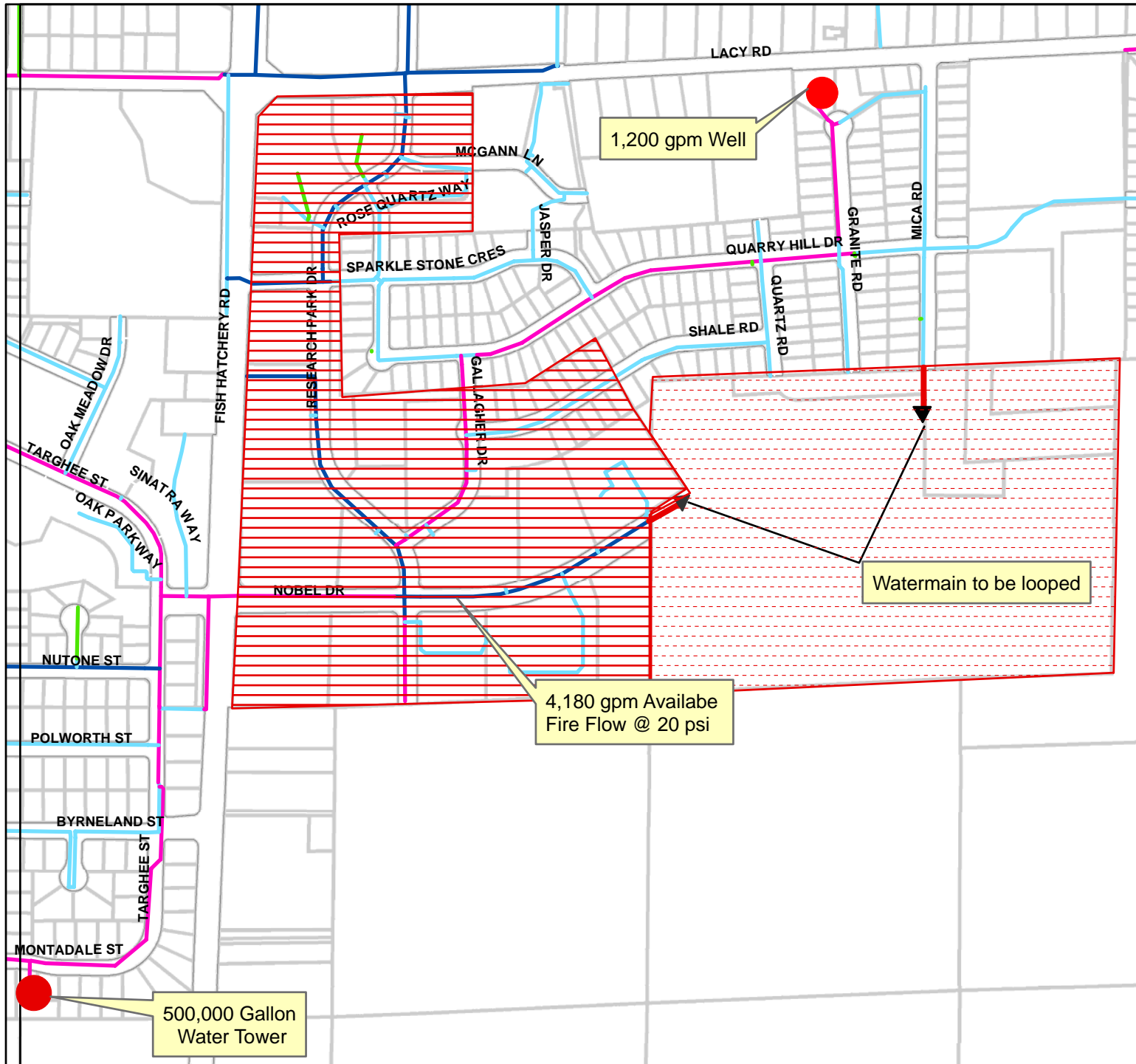
Madison Metropolitan Sewerage District's (MMSD) current available capacity in the interceptor that will service this area is 5.11 MGD.

MMSD Fees: Madison Metropolitan Sewerage District treats all of the City of Fitchburg's sewage. MMSD charges area-based fees for plant and interceptor construction costs. All properties that connect to sanitary sewerage treated by MMSD are required to pay these fees prior to starting construction of public improvements. The 2012 rate is \$45.72/1,000 SF.

Woods Hollow Fees: Fitchburg collects the design and construction costs for the Woods Hollow Interceptor. The Woods Hollow Interceptor conveys sewage to MMSD's interceptors. These costs are based on anticipated peak sewer usage. They are collected prior to the construction of public improvements. The 2012 rate for these fees is \$200.64 per peak GPM (peak flow).

Water Impact Fees: Fitchburg collects the costs of watermain infrastructure (wells, towers, transmission mains, etc.) through impact fees. These fees are collected with each building permit. These fees are based on anticipated water usage. The 2012 rate for this fee is \$1,020 per single family residential property (Single family residential usage of 225 gallons per day). For nonresidential users, water usage is estimated and the fee is adjusted accordingly based on this estimate.

Fitchburg Tech Campus Watermain



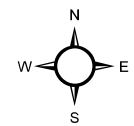
Legend

Pipe

- 6" MAIN
- 8" MAIN
- 10" MAIN
- 12" MAIN

Streets

- ROW
- Parcels
- Ex. FTC - Phase I
- Proposed FTC - Phase 2

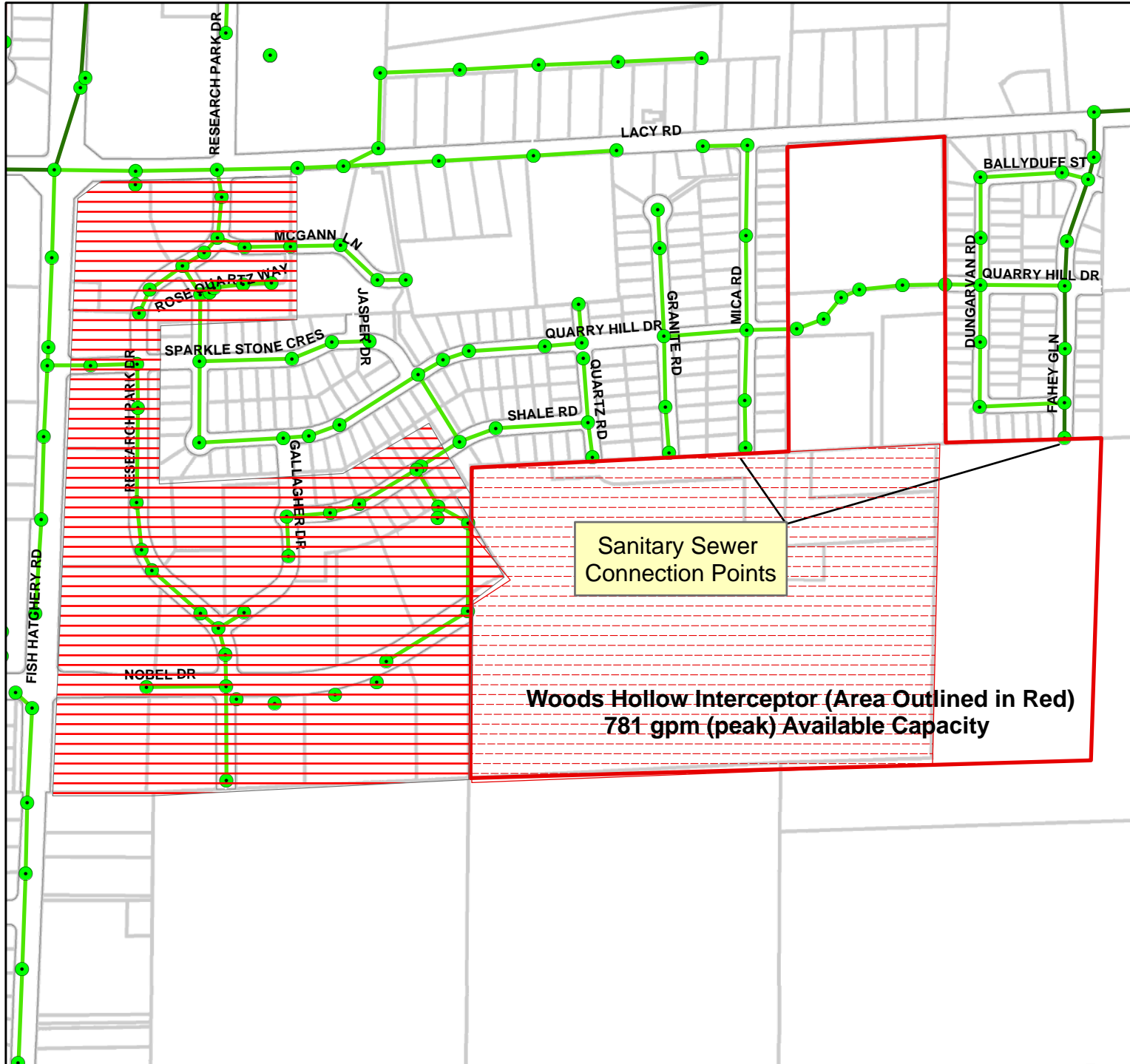


1 inch = 600 feet



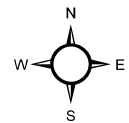
City of Fitchburg
 5520 Lacy Road
 Fitchburg, WI 53711
 Phone: 270-4200

Fitchburg Tech Campus Sanitary Sewer

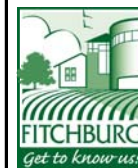


Legend

- MANHOLE
- Pipe**
- Main, 10
- Main, 12
- Main, 8
- Streets
- ROW
- Parcels
- Ex. FTC - Phase I
- Proposed FTC - Phase 2



1 inch = 600 feet



City of Fitchburg
 5520 Lacy Road
 Fitchburg, WI 53711
 Phone: 270-4200