

PLAT OF SURVEY

LOT 1 OF A CERTIFIED SURVEY MAP AS RECORDED IN VOLUME 15, PAGES 135-136; PART OF THE SE 1/4 AND THE SE. 1/4 OF THE SW. 1/4 OF SECTION 13, ALSO PART OF THE NW. 1/4 OF THE NE. 1/4, PART OF THE NE. 1/4 OF THE NE. 1/4, PART OF THE NE. 1/4 OF THE NW. 1/4, AND PART OF THE NW. 1/4 OF SECTION 24, ALL BEING IN T.2N., R.12E. OF THE 4TH P.M. PART IN CITY OF JANESVILLE, AND PART IN TOWN OF ROCK, ROCK COUNTY, WISCONSIN.

DESCRIBED AS FOLLOWS: BEGINNING AT AN ALUMINUM MONUMENT AT THE NE. CORNER OF SAID SECTION 24; THENCE S.0°18'59"E. ALONG THE EAST LINE OF THE NE. 1/4 OF SAID SECTION 24, A DISTANCE OF 400.21 FEET; THENCE N.88°27'04"W. PARALLEL WITH THE NORTH LINE OF SAID NE. 1/4 OF SAID SECTION 24, A DISTANCE OF 4017.90 FEET TO AN IRON PIN MONUMENT ON THE EAST LINE OF AN EXISTING PARCEL DESCRIBED IN VOL. 211, PAGES 237 AND 238; THENCE N.44°30'37"E. ALONG SAID EAST LINE 181.41 FEET TO AN IRON PIN MONUMENT; THENCE N.0°35'56"W. CONTINUING ALONG SAID EAST LINE 252.96 FEET TO AN IRON PIN MONUMENT AT THE SW. CORNER OF SAID SE. 1/4 OF THE SW. 1/4 OF SAID SECTION 13; THENCE N.0°02'51"W. 1318.61 FEET TO A CONCRETE MONUMENT AT THE NW. CORNER OF SAID SE. 1/4 OF SAID SW. 1/4 OF SAID SECTION 13; THENCE S.89°02'36"E. 1324.03 FEET TO AN IRON PIN MONUMENT AT THE NE. CORNER OF SAID SE. 1/4 OF SAID SW. 1/4 OF SAID SECTION 13; THENCE N.0°00'24"E. ALONG THE NORTH-SOUTH CENTERLINE OF SAID SECTION 13, A DISTANCE OF 1283.03 FEET TO AN IRON PIN MONUMENT ON THE SOUTH R.O.M. (RIGHT-OF-WAY) LINE OF S.T.H. 11; THENCE S.88°41'40"E. ALONG SAID R.O.M. LINE, 1757.16 FEET TO AN IRON PIN MONUMENT ON THE WEST LINE OF A CERTIFIED SURVEY MAP AS RECORDED IN VOLUME 8, PAGES 114 AND 115; THENCE S.1°18'01"N. 217.05 FEET TO AN IRON PIN MONUMENT AT THE SW. CORNER OF SAID LOT 1 OF SAID CERTIFIED SURVEY MAP; THENCE S.88°42'05"E. 110.00 FEET TO AN IRON PIN MONUMENT AT THE SE. CORNER OF SAID LOT 1; THENCE N.1°18'01"E. 200.00 FEET TO AN IRON PIN MONUMENT AT THE NE. CORNER OF SAID LOT 1; THENCE S.88°41'48"E. ALONG SAID R.O.M. LINE, 70.0 FEET TO AN IRON PIN MONUMENT AT THE NW. CORNER OF LOT 1 OF A CERTIFIED SURVEY MAP AS RECORDED IN VOLUME 9, PAGES 132 AND 133; THENCE S.1°18'01"N. 200.00 FEET TO AN IRON PIN MONUMENT AT THE SW. CORNER OF SAID LOT; THENCE S.88°42'05"E. 115.05 FEET TO AN IRON PIN MONUMENT AT THE SE. CORNER OF SAID LOT; THENCE N.1°18'01"E. 200.0 FEET TO AN IRON PIN MONUMENT AT THE NE. CORNER OF SAID LOT; THENCE S.88°41'48"E. ALONG SAID R.O.M. LINE, 163.80 FEET TO AN IRON PIN MONUMENT; THENCE S.89°21'10"E. 33.37 FEET TO THE EAST LINE OF THE SE. 1/4 OF SAID SECTION 13; THENCE S.0°00'13"N. ALONG SAID EAST LINE, 187.20 FEET; THENCE N.88°34'17"W. 40.01 FEET TO AN IRON PIN MONUMENT AT THE NE. CORNER OF LOT 1 OF A CERTIFIED SURVEY MAP AS RECORDED IN VOLUME 15, PAGES 135 AND 136; THENCE S.0°00'13"N. ALONG SAID WESTERLY R.O.M. LINE, 570.0 FEET TO AN IRON PIN MONUMENT AT THE SE. CORNER OF SAID LOT 1; THENCE S.88°34'17"E. 40.01 FEET TO SAID EAST LINE; THENCE S.0°00'13"N. ALONG SAID EAST LINE, 1322.41 FEET TO THE PLACE OF BEGINNING.

NOTE: THE ABOVE DESCRIPTION IS SUBJECT TO ANY AND ALL EASEMENTS AND AGREEMENTS, RECORDED OR UNRECORDED.

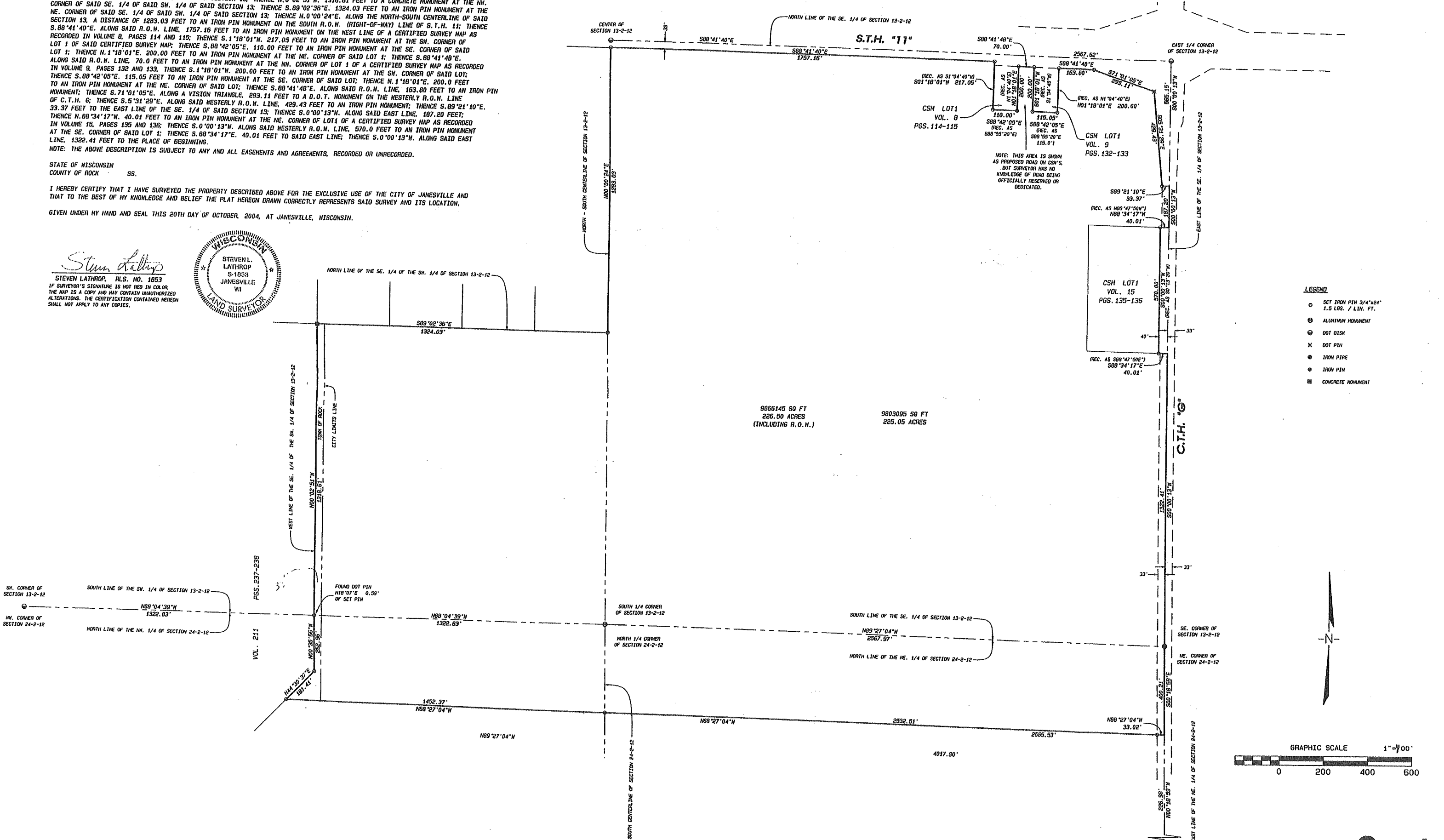
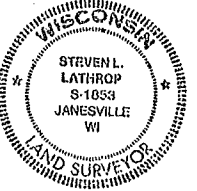
STATE OF WISCONSIN
COUNTY OF ROCK SS.

I HEREBY CERTIFY THAT I HAVE SURVEYED THE PROPERTY DESCRIBED ABOVE FOR THE EXCLUSIVE USE OF THE CITY OF JANESVILLE AND THAT TO THE BEST OF MY KNOWLEDGE AND BELIEF THE PLAT HEREON DRAWN CORRECTLY REPRESENTS SAID SURVEY AND ITS LOCATION.

GIVEN UNDER MY HAND AND SEAL THIS 20TH DAY OF OCTOBER, 2004, AT JANESVILLE, WISCONSIN.

Steven Lathrop

STEVEN LATHROP, R.L.S. NO. 1053
IF SURVEYOR'S SIGNATURE IS NOT RED IN COLOR, THE MAP IS A COPY AND MAY CONTAIN UNAUTHORIZED ALTERATIONS. THE CERTIFICATION CONTAINED HEREON SHALL NOT APPLY TO ANY COPIES.



- LEGEND
- SET IRON PIN 3/4"x24" 1.5 LBS. / LIN. FT.
 - ⊙ ALUMINUM MONUMENT
 - ⊙ DOT DISK
 - ⊙ DOT PIN
 - ⊙ IRON PIPE
 - ⊙ IRON PIN
 - ⊙ CONCRETE MONUMENT

