



Joe Berkhahn, PE
Continental 109 Fund LLC & Continental 52 Fund LLC
W134 N8675 Executive Parkway
Menomonee Falls, Wisconsin 53051

July 23, 2012

RE: Archaeological and Historical Archival Research for the West Bend Corporate Center Continental 109 & 52 Fund parcels
West Bend, Washington County, Wisconsin

Dear Mr. Berkhahn,

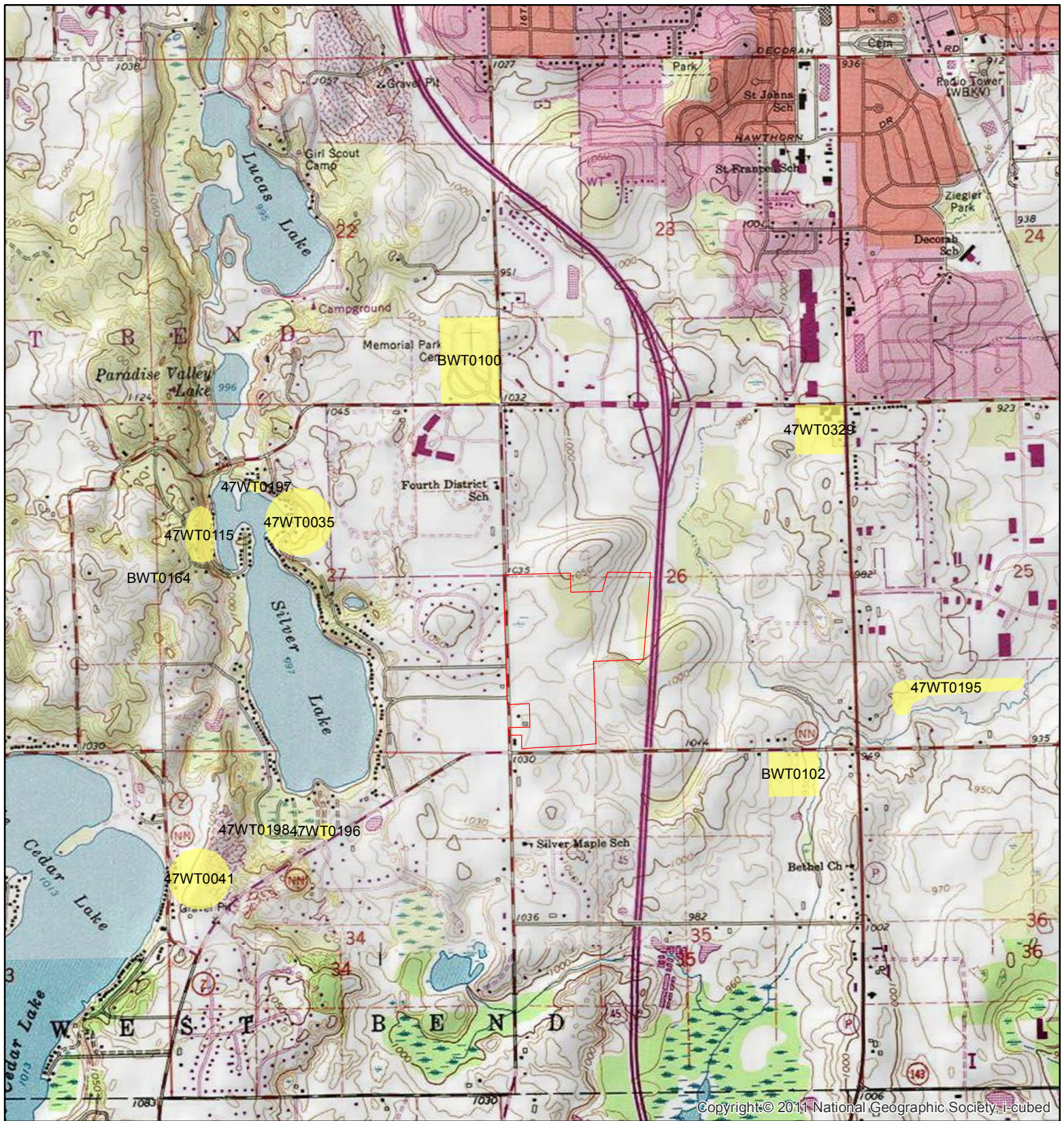
In July 2012, Great Lakes Archaeological Research Center, Inc. conducted an archaeological and historical site and property search for the West Bend Corporate Center Continental 109 & 52 Fund parcels (Figure 1). The archival search determined that there are no previously recorded archaeological sites or historic properties within or adjacent to the project area. Eleven archaeological sites are located within one mile of the project area (Figure 1). As such, no further work is required to satisfy Wis. Stats 157.70 or Wis Stats 44.40.

However, if federal funding, permitting, or over site are or become part of the project, a Phase I archaeological and historical investigation will be required by Sections 106 and 110 of the National Historic Preservation Act of 1966 as amended.

If you have an questions regarding the results or recommendations, please feel free to contact me at kshillinglaw@glarc.com or at 414-481-2093.

Sincerely,

Katherine Shillinglaw
Great Lakes Archaeological Research Center, Inc.



Copyright © 2011 National Geographic Society, i-cubed

West Bend Corporate Center

Greal Lakes Archaeological
Research Center, Inc.

Mapped 23 July 2012

Data Sources: USGS, WHS, GLARC

Legend

- Project Area
- Previously Reported Sites

