



Alliant Energy
4902 North Biltmore Lane
P.O. Box 77007
Madison, WI 53707-1007

1-800-ALLIANT (800-255-4268)
alliantenergy.com

MEMO

Beaver Dam Commerce Park

FROM: Jeff Muenkel, Foth Companies

REGARDING: Easement Report

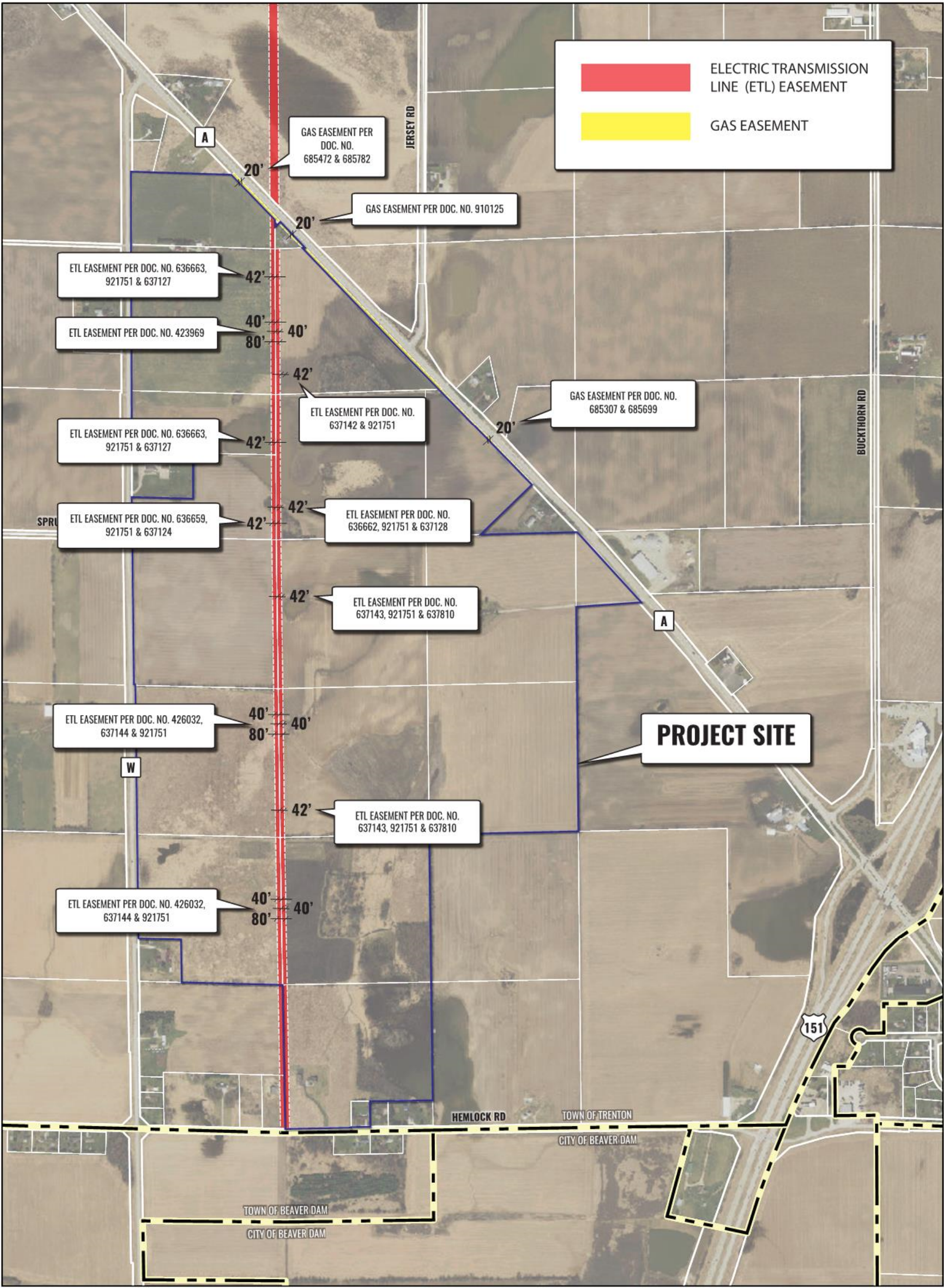
DATE: January 2019

This memo serves as documentation for the Wisconsin Certified Sites Program on easement documentation for the Beaver Dam Commerce Center.

As part of the Commerce Center due diligence full title reports and an ALTA Survey were completed for all properties. The ALTA Survey combined all easements found in the title searches and all referenced document numbers behind each easement are noted on the ALTA.

In order to complete a cleaner look at the easements currently found on the property this separate easement report and supporting map attachment are found. The map notes the types, sizes, and document number of each easement that are of substantial note. At this time the main easements consist of an electrical easement running north-south through the proposed Commerce Park and a small gas easement running along the frontage of the properties on CTH A.

The individual recorded documents for each easement can be produced upon request.



Easement Map

Beaver Dam Commerce Park - Beaver Dam, WI

September 2018



Alliant Energy

