



Alliant Energy  
4902 North Biltmore Lane  
P.O. Box 77007  
Madison, WI 53707-1007

1-800-ALLIANT (800-255-4268)  
alliantenergy.com

## MEMO

### Beaver Dam Commerce Park

FROM: Jeff Muenkel, Foth Companies

REGARDING: Electrical Infrastructure Report

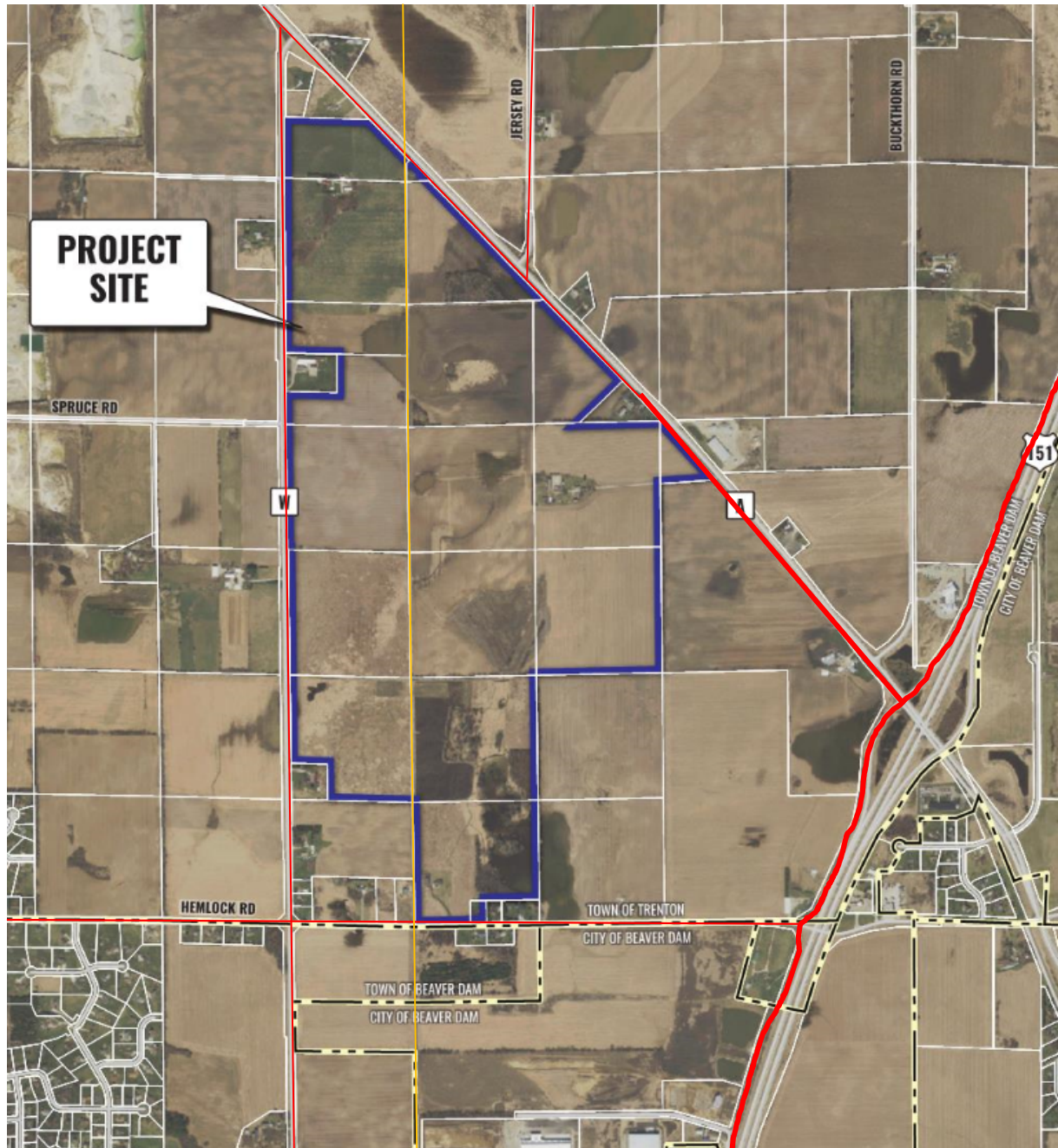
DATE: January 2019

---

This memo serves as documentation for the Wisconsin Certified Sites Program on electrical infrastructure documentation:

- Current Infrastructure: Per the map attached, single-phase electrical lines (indicated by thin red lines) exist along County Highway W (CTH W) and Hemlock Road, bordering the future Beaver Dam Commerce Park to the west and south. Single-phase lines also exist along County Highway A (CTH A) bordering a portion of the Commerce Park to the northeast. A three-phase electrical line (indicated by a thick red line) extends from U.S. Highway 151 along CTH A to the eastern edge of the Commerce Park. *NOTE: A high-voltage transmission line owned by the American Transmission Company (ATC) is found going north to south (shown as orange line on map) on the Commerce Park properties within an eighty (80) foot easement. ATC does not serve customers directly from this line.*
- Service Provider: The electrical lines are serviced by Alliant Energy in this area.
- Future Site Provision: The current infrastructure can support capacities for future business park uses and additional capacities can be achieved with further system improvements at a developer expense. Three-phase distribution can be extended as needed into the park. The final extension location will be determined upon known development.
- Cost: The current approximate cost to install electrical lines are per the following:
  - Overhead primary (12.47 kV) line: \$6 – 9 per linear foot
  - Underground primary (12.47 kV) line: \$7 – 18 per linear foot
  - Underground secondary (208 – 480 V) line: \$4 – 14 per linear foot
- Timing: Timing is dependent on when a future developer is known and a development is approved to begin. Alliant Energy can work within a developer or municipality construction schedule.
- Funding Responsibility: Funding of new electrical line improvements are developer or municipality driven. An allowance will be applied toward constructions costs based on the load addition. The developer would be responsible for any remaining cost. Alliant Energy may offset improvement costs if a future electrical line extension needs to be upsized in order to serve the greater region in which the improvement is proposed.
- Permitting Requirements: Alliant Energy is the sole permitting authority of any future electrical line improvements in this area. Upon development approval the developer or municipality would work with Alliant Energy electrical reps to orchestrate a design and construction schedule.

Interstate Power and Light Company (IPL) and Wisconsin Power and Light Company (WPL) both Alliant Energy utility companies and hereafter referred to as the Utilities) assume no liability and make no warranty or representation whatsoever as to the accuracy or completeness of the information contained on this map. Any data provided is for general information only and any use of this data is at your own risk. Any intention to excavate requires compliance with state law including contacting the appropriate one call notification center. Prior to excavation, the actual physical location of buried facilities must be determined pursuant to the requirements of applicable law. This map constitutes limited protected nonpublic data that is confidential and proprietary to the Utilities. By one of the Utilities issuing you a copy of this map, You are deemed to have agreed to treat this information as confidential and to use and disclose it only for the specific project identified in your request for the map and as further restricted below. (If you disagree, please destroy this map and inform the Alliant Energy representative that sent it to You that You cannot comply, that your copy has been removed from all storage mechanisms, and that You will not further use this map.) This map may only be copied or reproduced for internal use by the Utilities or copied, reproduced, or disclosed by You subject to the terms of a nondisclosure or confidentiality agreement between your organization and those to whom you intend to disclose such information for a specific project, whereby the potential recipients agree to use this map only for the specific project identified in the request for the map and to treat this map as the Utilities' confidential and proprietary information restricted from further use, copying or disclosure indefinitely. Any other use, copying or reproduction is strictly forbidden.



**Alliant Energy Confidential**  
**Classification: Confidential**

**1:0**

