



ADVANCED MANUFACTURING IN WISCONSIN



9,300⁺

Wisconsin manufacturing companies

483,000⁺

Wisconsin manufacturing jobs



2nd

HIGHEST
MANUFACTURING
EMPLOYMENT
CONCENTRATION
IN THE U.S.

In Wisconsin, we offer unparalleled advantages that are uniquely suited to advanced manufacturing.

Workforce. We deliver the second-highest concentration of experienced manufacturing workers in the U.S., often three to four times higher in critical industry sectors than competing states.

Central location. From the center of the U.S., we offer quick access to markets throughout North America. Chicago and its O'Hare Airport are less than an hour from our border. And our well-developed logistics sector moves your goods to market efficiently via rail, road, air or water.

Academic excellence. We push the boundaries of theoretical and applied science—and prepare talent for the future. At more than \$1 billion annually, our flagship University of Wisconsin-Madison ranks #8 in the U.S. for research spending; the University of Wisconsin System awards more than 36,000 degrees annually.

Low risk of natural disaster. We offer remarkably low risk for every imaginable type of disaster, from earthquakes and wildfires to climate threats like heat waves, tornadoes and hurricanes.

Fiscal responsibility. From our fully funded state pension system—one of only two in the U.S.—to our extraordinary credit rating, we offer a politically stable, low-tax, low-regulation, business-welcoming environment.

Discover why global leaders in vital sectors—advanced manufacturing; energy, power and controls; water technology; food and beverage; and biohealth—are choosing Wisconsin as their entry point into North American markets.



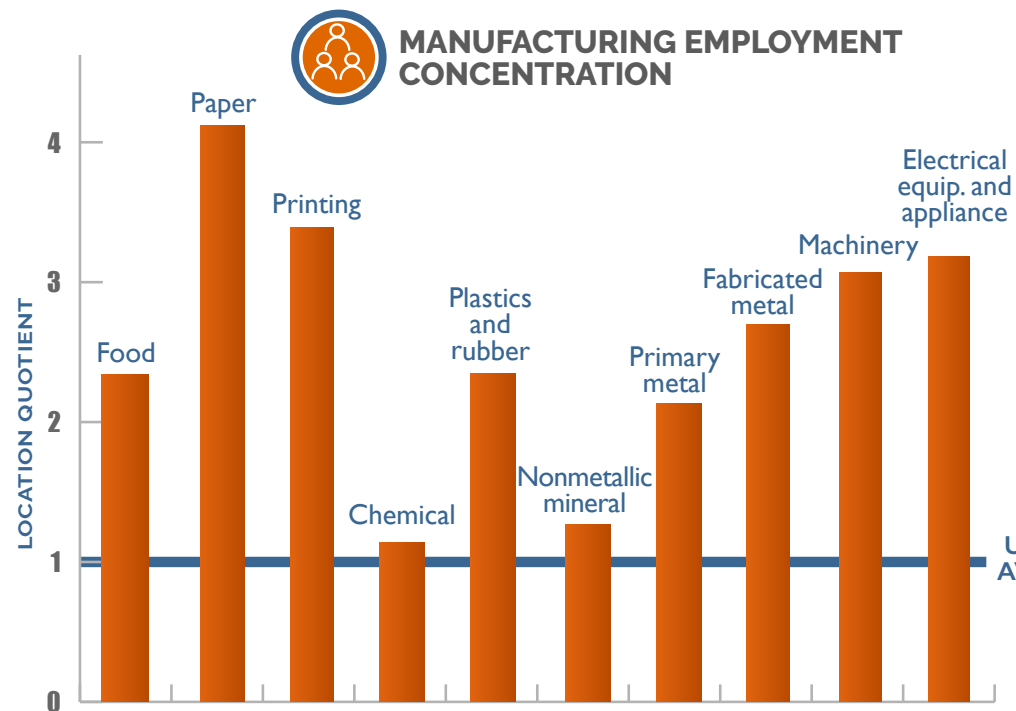
WORKFORCE BUILT FOR SUCCESS

WISCONSIN'S POPULATION
5.8 MILLION

BACHELOR'S DEGREE OR HIGHER
31% of adults

We pioneered industry-focused workforce development in the U.S. As the first state to develop a technical college system, we have 100+ years of experience training our workforce to fulfill ever-changing requirements. Our investment in fabrication laboratories (fab labs) at the K-12 level—\$3.4 million in state support over the past six years—is creating opportunities for students to get hands-on experience solving real-world problems using science, technology, engineering, art and math (STEAM) skills.

National manufacturing employment concentration data proves the Wisconsin advantage: we offer you a skilled, experienced workforce that's ready to be productive starting on the day you open your doors.



NEARLY
5,000
ENGINEERING DEGREES AND
CERTIFICATES AWARDED IN 2019

ACADEMIC EXCELLENCE

In Wisconsin, our universities lead in research and technology commercialization, supporting partnerships, companies and policymakers to develop new, innovative products that fill market needs. For example:

UW-Madison and **UW-Milwaukee** are both Tier 1 research universities; UW-Madison ranks #8 in the U.S. for research spending, with nearly \$1.3 billion in research expenditures in fiscal year 2019.

The UW-Madison College of Engineering is ranked in the top 10 for research expenditures and near the top of global rankings. Centers of excellence specialize in advanced materials; computer, data and information sciences; and IoT research.

UW-Milwaukee College of Engineering and **Applied Science** is rated among the top 2% of research universities in the U.S.

NEARLY
510,000
POST-SECONDARY STUDENTS

Gateway Technical College's **SC Johnson Center for Integrated Manufacturing and Engineering Technology** (iMET) educates and certifies youth and adults on the standards of IIoT manufacturing and engineering programming, transforming the manufacturing environment to include artificial intelligence, robotics, virtual reality, mechatronics, data analytics and material engineering.

Across the state, our 65 higher education campuses prepare students to make strong contributions to Wisconsin's economy—and the leaders who hire them.

Industry Strong. Technology Smart. Future Ready.

“We couldn't be more pleased to commit to keeping the headquarters of Komatsu Mining right here in Milwaukee.”

-Jeffrey Dawes, CEO, Komatsu Mining Corp.

BUILT FOR INNOVATION

In Wisconsin, our tradition of innovation is legendary. We are the state that invented Social Security, developed lifesaving bone marrow transplant technology and perfected the ice cream sundae. Our passion for innovation continues to this day. We're pushing the boundaries of quantum physics, and a Wisconsin engineering graduate's breathable and comfortable, yet effective, face mask made *Time* magazine's list of the best inventions of 2020.

We nurture innovation through public-private partnerships that ensure that talent and technology come together to connect systems more efficiently, streamline product life cycles and apply machine learning to improve reliability. From real-time data analytics that inform predictive maintenance to automation designed to optimize human interaction, we are driving progress in IIoT solutions and we know what manufacturers need today so they can be ready for tomorrow.

In Wisconsin, we are at the epicenter of advanced manufacturing, both in operations and in smart product development. We are home to the global leader in manufacturing automation, Rockwell Automation, itself a model collaborator with academic partners in training the talent and developing the technologies of the future.

Wisconsin's leaders in manufacturing:

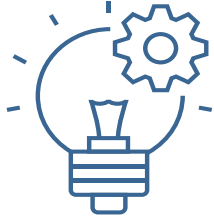


SUPPLY CHAIN

Wisconsin's high concentration of manufacturing across key industry sectors means companies that decide to locate here can get up and running quickly. **Wisconsin's manufacturing supply chain is:**

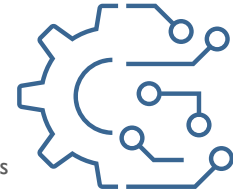
RELIABLE and FLEXIBLE

Wisconsin is a leader in manufacturing and has been for more than a century. Our manufacturing capabilities are time-tested, and are also evolving as technology changes.



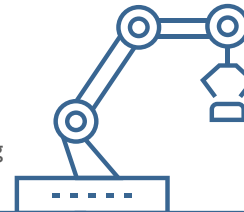
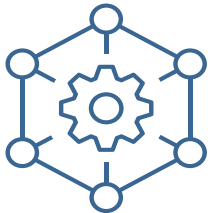
EFFICIENT and COMPETITIVE

Our **Transformational Productivity Initiative** (TPI), a program of the Wisconsin Manufacturing Extension Partnership, is a statewide public-private collaboration that improves the efficiency of participating companies by more than 30%. TPI helps manufacturers in Wisconsin do more through advancements that respond to market needs.



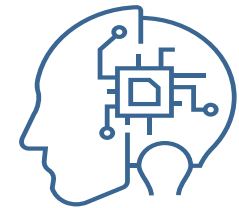
CONNECTED and INNOVATIVE

The University of Wisconsin-Milwaukee is home to the **Connected Systems Institute**, a center of excellence that develops manufacturing domain specialists. At the institute, industry collaborates with academia on research to support the development of advanced manufacturing processes in areas including IIoT, factory automation and the implementation of Industry 4.0 solutions.



SUSTAINABLE and RESILIENT

The only program of its kind in the U.S., Wisconsin's **Profitable Sustainability Initiative** helps small and midsize manufacturers develop sustainable practices that save money and improve competitiveness.



For information on sources and attribution visit InWisconsin.com/industrydata



Wisconsin provides the ideal business environment and all the necessary elements you need to grow your business: talent, technology, supply chain, location and infrastructure.



WISCONSIN

Visit InWisconsin.com to learn more.