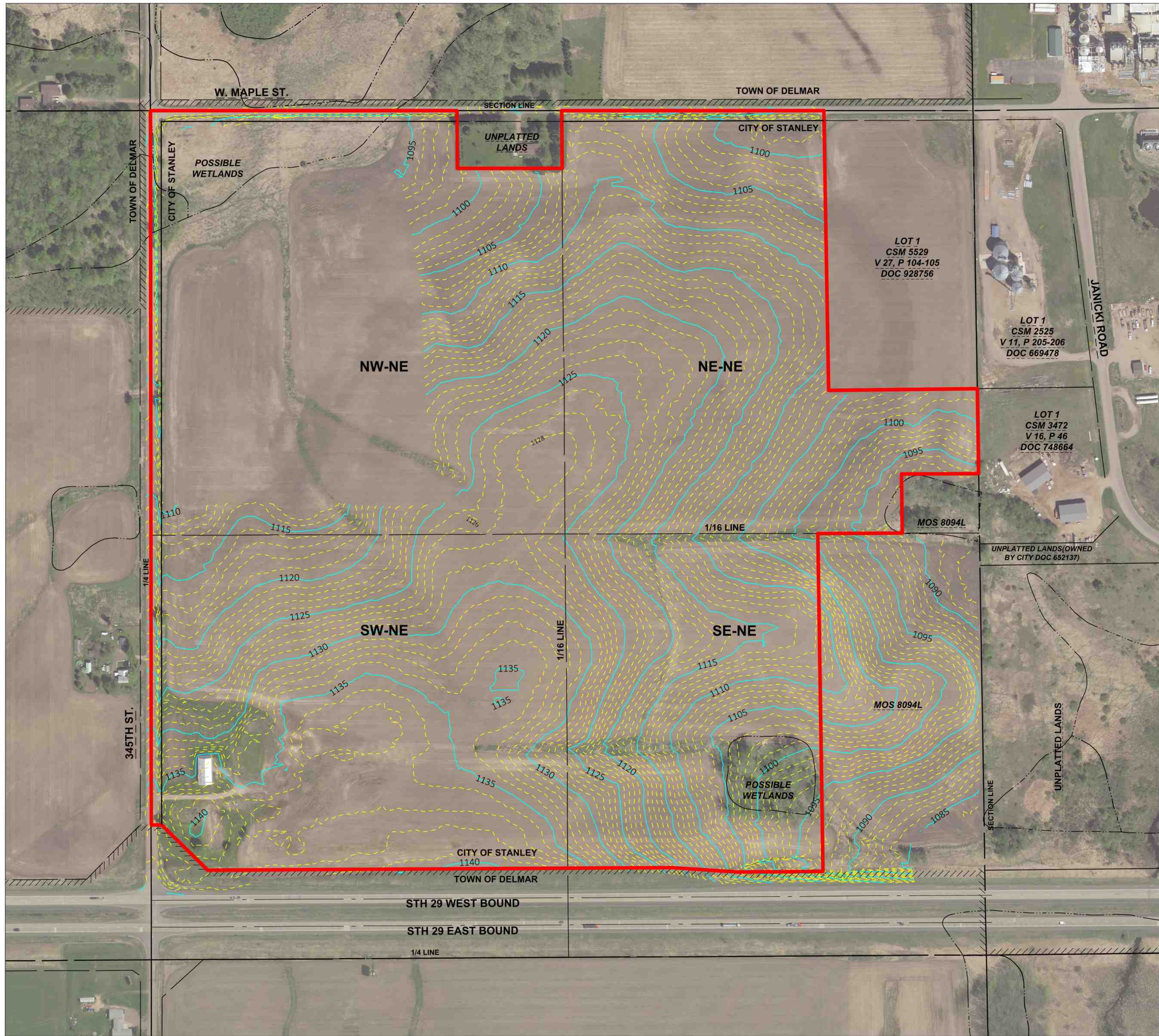
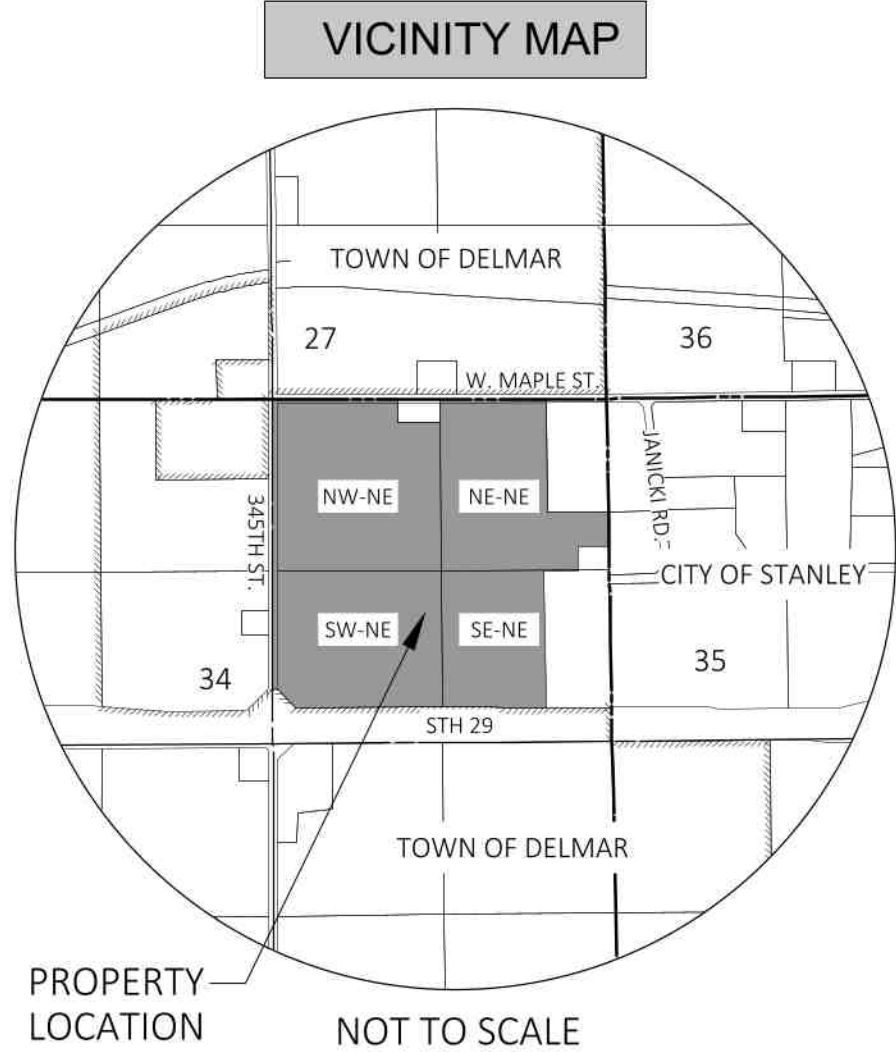
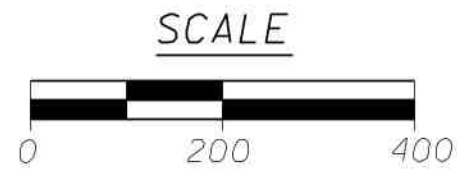


# TOPOGRAPHIC MAP

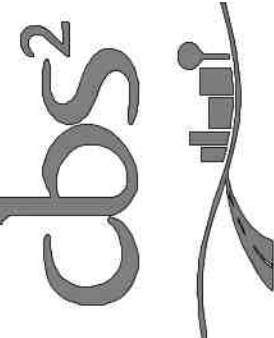


### LEGEND

- 5 FOOT MAJOR CONTOURS
- - - 1 FOOT MINOR CONTOURS
- PROPERTY BOUNDARY



ENGINEERS - SURVEYORS - ARCHITECTS  
 770 TECHNOLOGY WAY  
 CHIPPEWA FALLS, WI 54729  
 PHONE: 715.861.5226  
 www.cbssquaredinc.com



## TOPOGRAPHIC MAP STANLEY, WI

DATE:	3/10/2023	REVISION DATE:	
DRAWN BY:	BPS	CHECKED BY:	NCB
SCALE:	1" = 200'	PROJECT NO.:	CGEDC